

# Create your print station.

## Optimize your time.

Inline or offline  
matrix remover



Label rewinder



### About Pro Series Label Printers

A versatile, professional label printing for labels with impact! OKI's Pro Series Label Printers are a true breakthrough in printing technology for the label industry.

On demand, professional four and five color narrow-format label printing is now possible in-house on a wide range of label media taking creativity and flexibility to a new level.

### Improve your workflow

The new labeling accessories designed specifically for OKI Pro Series Label Printers will make the production and delivery of customized color labels on roll much easier.

Matrix Remover in a single pass process that removes the waste material from the pre die-cut media and rewinds the finished labels on a roll.

The compact and resistant Rewinder allows a synchronized printed media rewinding process on a 3" cardboard core.

# Inline Matrix remover for OKI Pro Series Label Printers

MCHMTX170



Designed to be installed and work in-line to OKI Pro Series Label Printer, the Matrix Remover is an all-in-one system capable of removing the waste material from the pre die-cut media and rewinding on a 3" cardboard core with the finished printed labels face out.

The unit is equipped with an external auto-switching 100/240VAC - 2.5A at 24V power supply and an electronic circuit in charge of controlling the functions.

Perfect bleed labels can be achieved on pre die cut media after the waste material is removed from your artwork with this matrix intact.

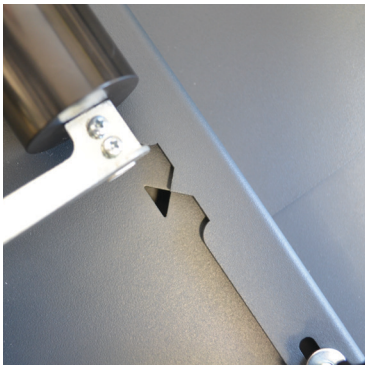
The production of edge-to-edge printed labels on roll will become extremely easy and quick.

As an optional accessory (MTXSLT170), we make it possible to add a slitter module to this unit giving you the opportunity to split the original media width in narrower rolls.

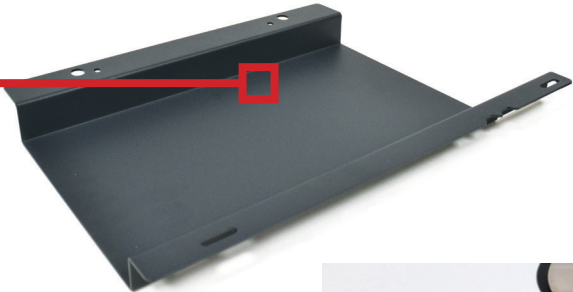
Outside diameter up to 250mm (9.84")

Media width up to 170mm (6.69")

3" fixed core holder



*In order to guarantee a perfectly aligned media path, a specific baseplate which easily accommodates the printer is included.*



*To ensure that both systems are perfectly aligned, we've included a tough iron table equipped with wheels to allow a smooth mobility, and added shelves to stock your printed materials for a complete printer station.*

TBLMCHRW170 + TBLEXT

# Offline Matrix remover for OKI Pro Series Label Printers

MCH100MTX17



This new offline matrix remover version for Oki Pro Series gives the user the ability to remove the waste material from printed or blank pre die-cut rolls of labels up to 170mm wide onto 3" cardboard core and having an outside diameter up to 200mm.

The finished labels will be rewinded face out only.

## Workflow optimization

*Time Free is the the main benefit of this Matrix Remover & Slitter.*

*Being an offline solution where load the printed pre die-cut roll, each job will be completed without any interruption which could have occurred during the printing process in case it was in-line with the printer.*



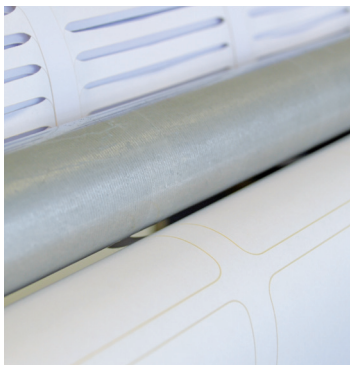
*Manual speed adjustment.*

*Manual clutch adjustment.*

The unit is equipped with an external auto-switching 100/240VAC - 2.5A at 24V power supply and an electronic circuit in charge of controlling the functions.

Perfect full bleed labels can be achieved on pre die cut media after the waste material is removed.

The production of edge-to-edge printed labels on roll will become extremely easy and quick.



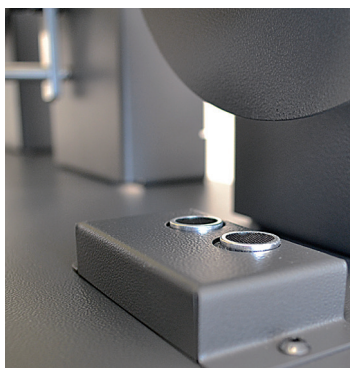
*The peeling rollers module facilitate the matrix removal from the die-cut roll, reducing the risk of tearing and ensuring more precise operation of the machine.*

**Outside diameter up to 200mm (7.87")**

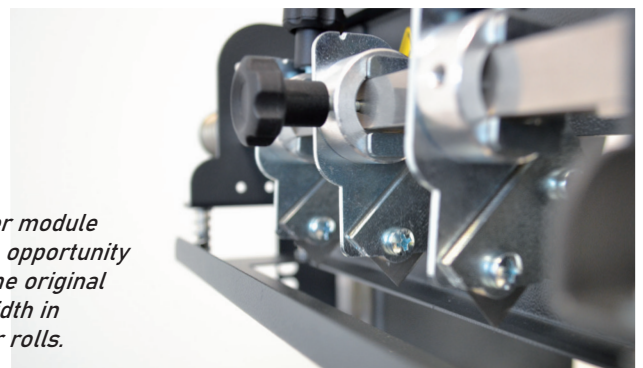
**Media width up to 170mm (6.69")**

**3" fixed core holder**

*The ultrasonic sensor is used to adjust automatically and electronically the tension on the media despite the roll diameter variation. With this feature it is possible to get extremely tight finished rolls.*



*The slitter module gives the opportunity to split the original media width in narrower rolls.*



# Label rewriter for OKI Pro Series Label Printers



The motorized core holder can handle printed media up to 170mm (6.69") wide, and rewind rolls having an outside diameter up to 250mm (9.84") with an internal 3" fixed core. The rewinded rolls will be face out only.

The rewinding speed is synchronized automatically by the tension arm while when the roll of labels runs out, the rewinder stops by itself.

The unit is equipped with an external auto-switching 100/240VAC - 2.5A at 24V power supply and an electronic circuit controls the functions.

Thanks to its revolutionary design and toughness, the rewinder is perfect for high and heavy duty jobs.

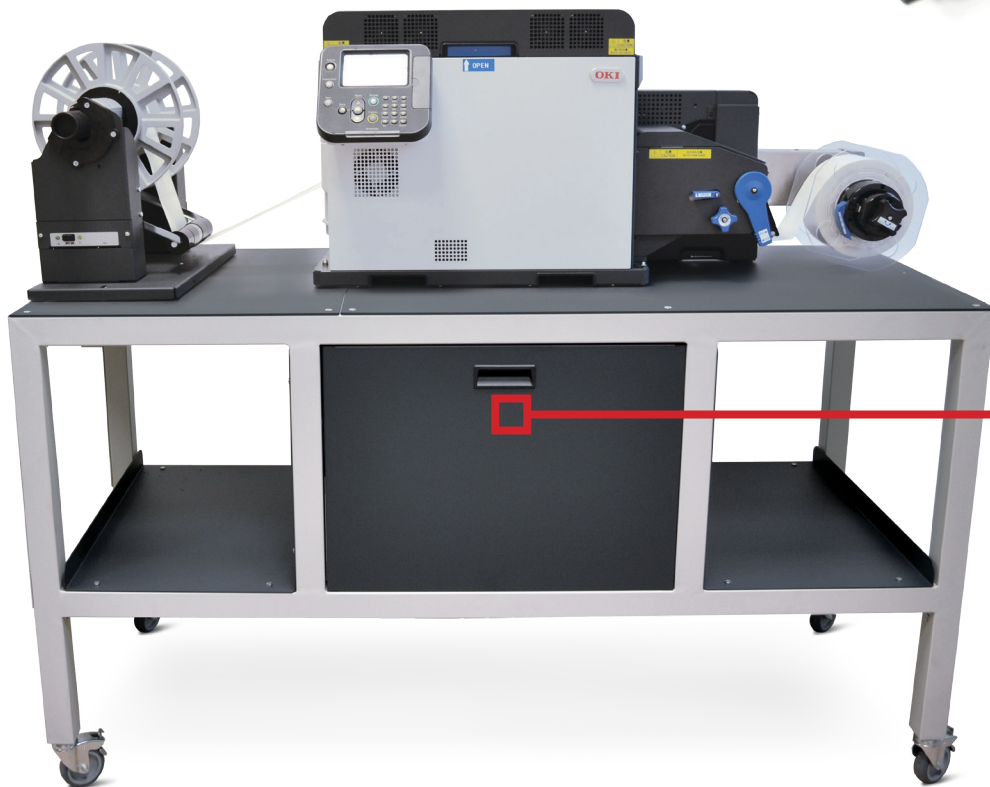
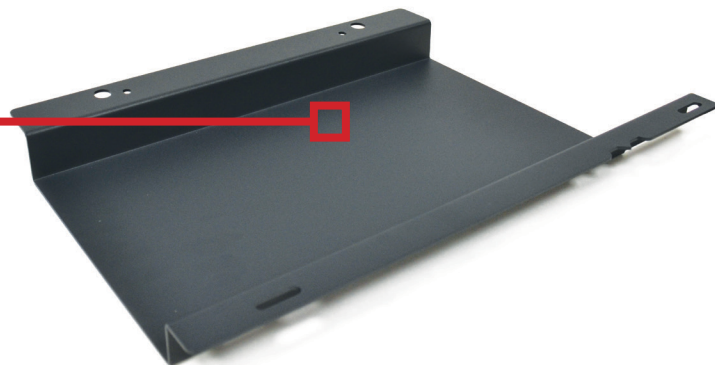
Outside diameter up to 250mm (9.84")

Media width up to 170mm (6.69")

3" fixed core holder



*In order to guarantee a perfectly aligned media path, a specific baseplate which easily accommodates the printer is included.*



*To ensure that both systems are perfectly aligned, we've included a tough iron table equipped with wheels to allow a smooth mobility, and added shelves to stock your printed materials for a complete printer station.*

TBLMCHRW170