



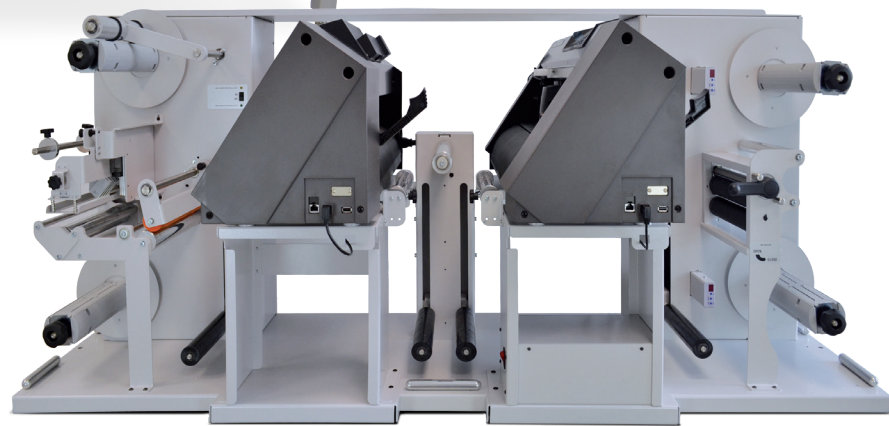
### MODELS

#### SCR35x2

Maximum media width 350mm (13.77")

#### VRG22x2

Maximum media width 225mm (8.86")



## Blade label finisher two times faster.

The finishing system series powered by double plotters is the ideal solution for those who choose the knife cutting technology with faster delivery for their jobs.

Our finishers unwind, cold laminate for higher durability, digitally die cut, remove the waste, slit, and rewind in the single pass, offering you the digital workflow to professionally obtain high quality finished labels.

These systems designed with a desktop and short footprint look, allow you to cut different types of paper and plastic films in any shape, size and quantity with a very limited waste of media during the loading process allowing the opportunity to also run very short run jobs.

***Being a digital workflow, no extra costs for die plates are involved.***

The main reason to own a label finishing system is to acquire the independence and flexibility to run label productions on demand with the freedom to change the shape, size and quantity for each single job every time.

**SPEED**

**8 m/min**

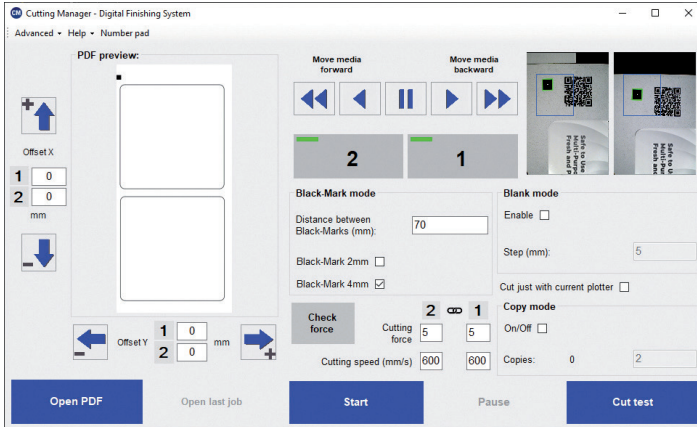
*The working speed is determined by the label size, path complexity and number of labels across in the cutting layout*

## SOME BENEFITS:

- » Printing distortion correction
- » Aligned cutting offset even on blank media
- » Smart software to manage both plotters
- » Eliminate order stock of pre-die cut rolls
- » No limitations to your creativity
- » Faster without compromising the cut quality
- » Job time reduced to half
- » Easy to create graphic file

# SMART SOLUTIONS FOR THE LABELING INDUSTRY

## LABEL FINISHING SYSTEMS WITH DOUBLE PLOTTER



## THE CUTTING MANAGER

The cutting position is synchronized by using an intuitive software and CCD cameras to detect the single registration mark inside each layout, which can then be adjusted through the offset settings.

Importing a PDF cutting file to begin this process simplifies the workflow with an added benefit of tracking each completed job and viewing the daily working reports that are auto-generated by the system.

## WHY SELECT THE DOUBLE PLOTTER FINISHERS INSTEAD OF THE DOUBLE HEADS SYSTEMS

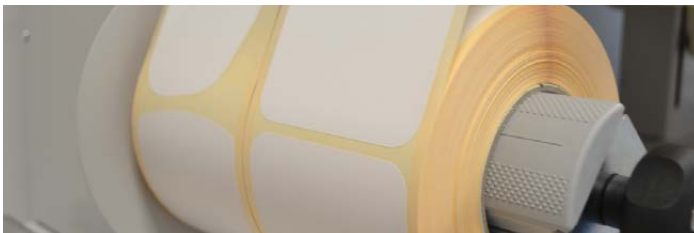
The double plotter finisher always guarantees a faster cutting speed even when:

THE LAYOUT CONTAINS DIFFERENT SHAPES

THE LAYOUT CONTAINS DIFFERENT SIZES

THE WIDTH OF LABEL REACHES THE MAXIMUM MEDIA WIDTH

For all the above scenarios the two heads on the double plotter are always in action while on the double head system, one head must be disabled.



## BLANK MODE FEATURE

Both finishers can also run in blank label mode, working synchronized and keeping the required gap constant. Through the software it is possible to set each single parameter in just a few clicks.

### SPECIFICATIONS

Part number	VRG22X2	SCR35X2
Input / Output max. roll diameter	7.87" (200mm)	9.84" (250mm)
Minimum media width	4.25" (108mm)	4.25" (108mm)
Maximum media width	8.86" (225mm)	13.77" (350mm)
Maximum cutting width	8.46" (215mm)	13" (340mm)
Minimum / Maximum label length	0.39" (10mm) / 13.77" (350mm)* *with limitations	0.39" (10mm) / 17.71" (330mm)* *with limitations
Minimum slitting width	19mm (0.75")	
Number of slitting blades	up to 8	up to 13
Liner rewinder module	YES (optional)	YES
Dimensions	L = 67.71" (172 cm) H = 29.52" (75 cm) W = 30.7" (78 cm)	L = 93" (236 cm) H = 60.23" (153 cm) W = 30.3" (77 cm)
Roll core size	3" (76mm)	
Maximum media thickness	0.25mm (10 mil)	
Cut precision	0.012" (0.3mm)	
Programmable Cutting Force	20 gf - 300 gf in 31 steps (Max 300 gf)	
Power requirements	100-240 VAC, 240 watts	
Interface & Software	Software running with Windows 8.1 or later. Not supported by macOS. PC needs 2 USB port for plotters.	
Warranty	Two year parts and labor. Usage limitation may apply	