

USER MANUAL

SCR35X2

Digital label finishing system

WITH GRAPHTEC CE7000-40

THIS PRODUCT IS CERTIFIED:





IMPORTANT: Please keep the original packaging in case you need to return the material. If we receive the system in non-original packaging, the warranty will be void.

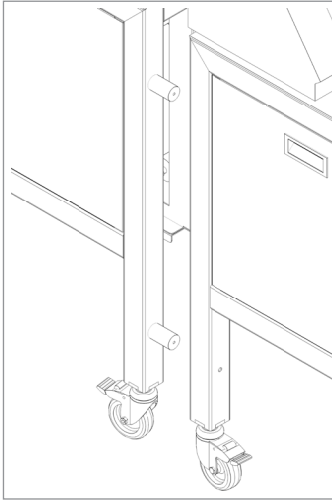


IMPORTANT: The latest version of the software is available on our websites **www.dpr-srl.it** or **www.dpr-llc.com**, section "Download".

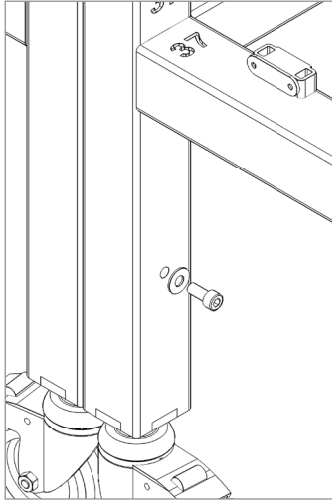
INDEX

Installation	page 6
How to install outer disc	page 7
How to install the plotter onto the rewinder table	page 7
Plug-in the cables	page 7
System requirements	page 8
How to install the core holder	page 8
How to install the cutting plotter	page 9
Software activation	page 11
How to load and operate with the lamination module.....	page 12
How to set the lamination sensor	page 13
Load the media into the plotter	page 14
How to run the cut test and start a job.....	page 15
How load the matrix remover & slitter	page 15
How to load the matrix remover core holder	page 18
How to load the rewinder core holder and set the slitter module	page 18
How to add or remove blade holder	page 20
Metal guide alignment	page 20
Error Messages	page 21
Black-mark detection	page 21
Cutting file specifications	page 22
Black-mark position into the cutting file and printed artwork	page 22
Black-mark position in the media	page 23
How to cut blank labels	page 23
How to update software	page 24
How to restore plotter settings	page 25
How and when to reduce the plotter feeding speed	page 26
Media path	page 27
Ultrasonic sensor calibration	page 27
Lamination / matrix remover&slitter modules speed rotation	page 28
How to install pressing roller	page 29
How to used the o-ring on the matrix roller	page 29
Narrower media	page 30
Graphtec maintenance	page 31
How to replace the knife.....	page 31
How to replace the slitter blade	page 32
How to replace the cutting mat	page 33
QR code	page 34
Troubleshooting	page 36

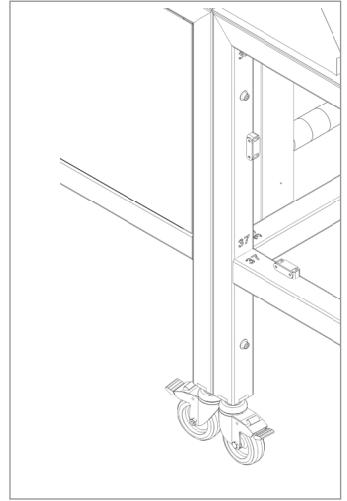
INSTALLATION



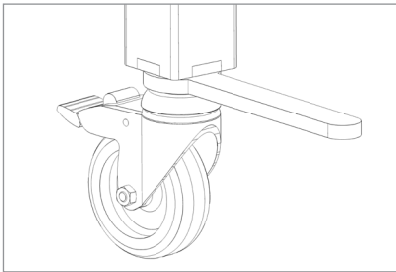
Insert the four studs (on the unwinder table) into the slots located on the rewinder table.



Insert a washer between the table and the socket allen screws.



Using a screwdriver, secure them together with four allen screws

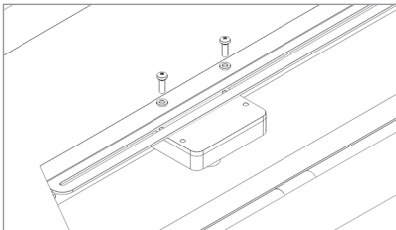


With a wrench, you can raise or lower each foot by turning the bolt left or right. This should assist in leveling the unit.

This should help you to level the unit.

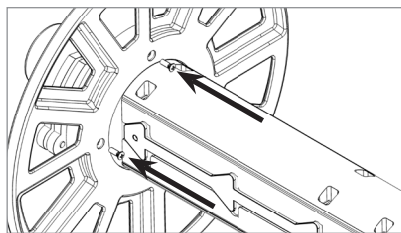
Clockwise > raises the unit
Counterclockwise > lowers the unit

HOW TO INSTALL THE CAMERA ON THE PLOTTER (REWINDER TABLE)



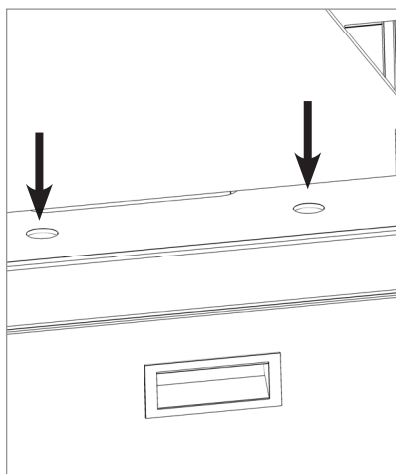
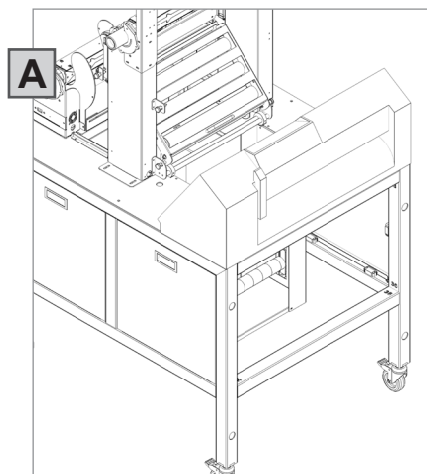
After connecting the tables, install the camera by securing the camera support using the two screws and washers on first plotter.

HOW TO INSTALL OUTER DISC



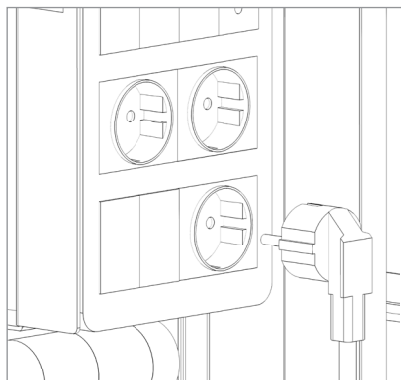
Using a screwdriver, install the outer disc on the Core Holder for printed rolls.

HOW TO INSTALL THE PLOTTER ONTO THE REWINDER TABLE



Install the plotter as shown in figure “A” and locking it in the appropriate holes.

PLUG-IN THE CABLES



After connecting the tables, plug the cable belonging to the rewinder module into the electric switchboard on the unwinder module (*behind the central magnetic panel*).

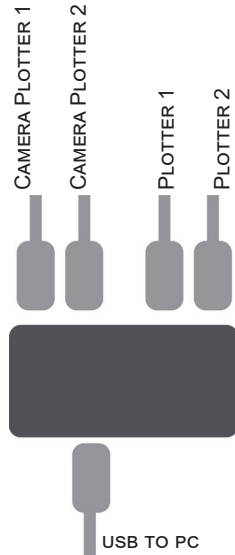
SYSTEM REQUIREMENTS

The cutting manager works on Windows OS from Windows 8.1. We do not guarantee its functionality on previous versions.

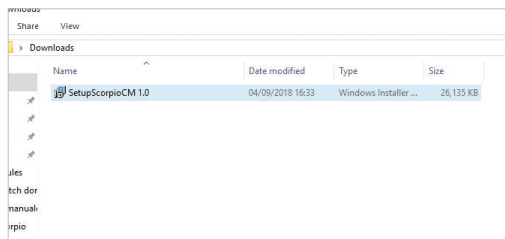
Not compatible with macOS systems.

Cutting files: Adobe Illustrator, CorelDraw or Inkscape (PDF).

Diagram connectors behind the on-off panel.



HOW TO INSTALL THE CUTTING PLOTTER

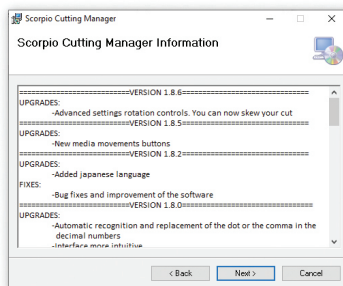


1. Click on “SetupCM...” and follow the step by step instructions to complete the installation.

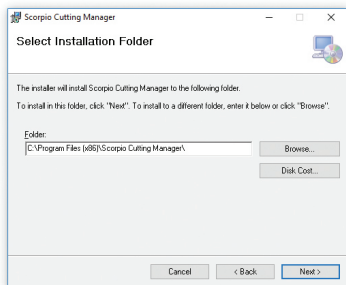
Please DO NOT connect the unit USB to your pc before the installation is complete



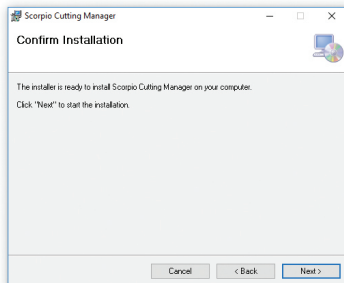
2. Click NEXT



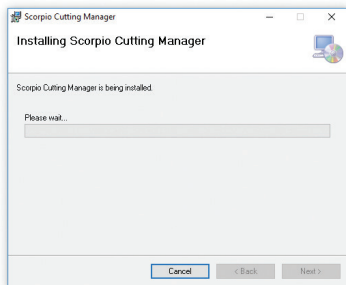
3. Click NEXT



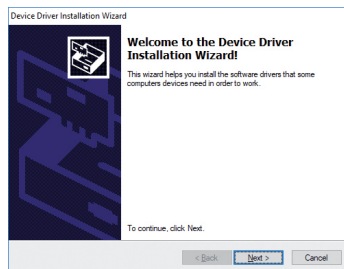
4. Click NEXT



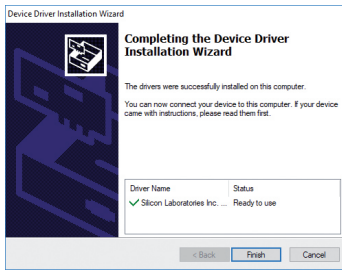
5. Click YES



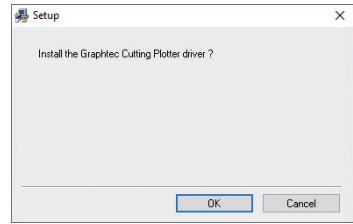
6. In process



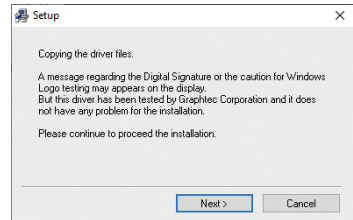
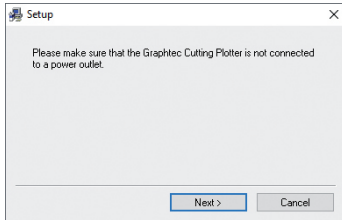
7. Click NEXT



8. Click FINISH

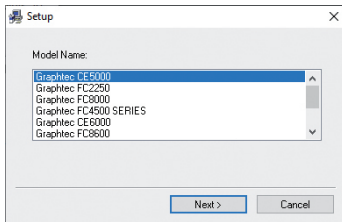


9. Click OK

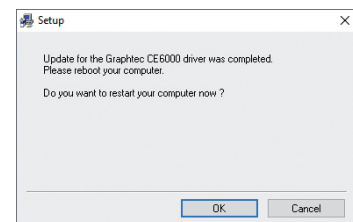


10. Click NEXT (Remove the USB from your pc, and turn off the unit)

11. Click NEXT



12. Choose the right model name of your Graphtec (CE7000-40).



13. Wait until the sign "Update for the Graphtec CE7000-40 driver was completed" shows up. You may need to restart the computer.

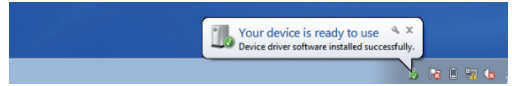
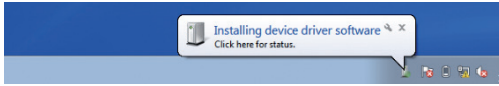
Click NEXT

Click OK

The installation is completed. A Cutting Manager shortcut is displayed on your desktop

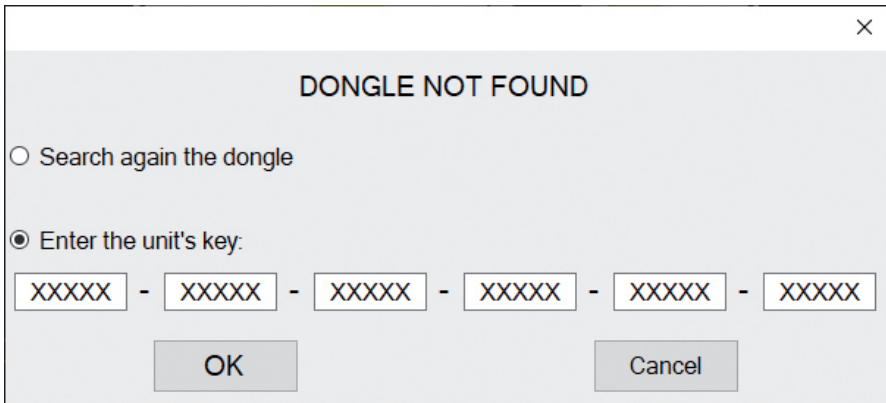
Plug in the USB camera and the USB dongle, they will auto-install.

If your computer already has a camera installed, we recommend disabling it. If you do not, your pc will ignore the camera on the plotter.



CM Software will generate a folder in the Windows start menu.

SOFTWARE ACTIVATION



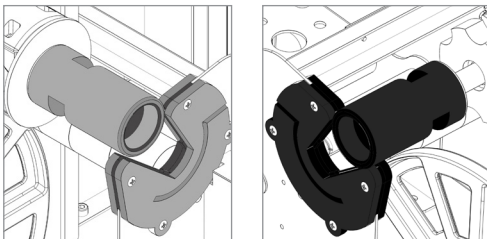
To activate the software you must have **one of these options**:

- The unit's key, which can be found attached to the plotter. *(valid up to 3 activations)*
WHEN YOU ACTIVATE THE LICENSE YOU MUST BE CONNECTED TO INTERNET

or

- A red dongle (already plugged inside the unit).

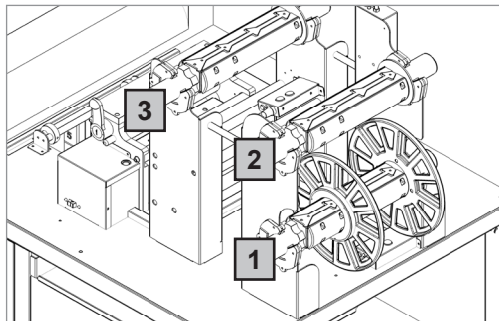
HOW TO INSTALL THE CORE HOLDER



The grey handle must match with the grey holder and the black handle with the black holder.

IMPORTANT: screws must be face down.

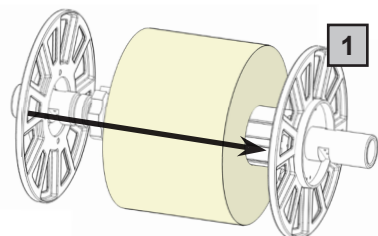
HOW TO LOAD AND OPERATE THE LAMINATION MODULE



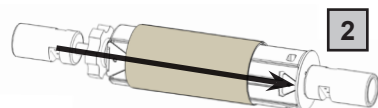
Core Holder No. 1 > Printed roll

Core Holder No. 2 > Liner roll

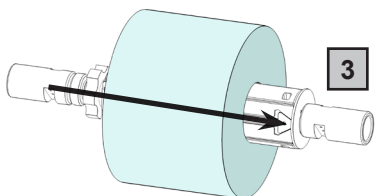
Core Holder No. 3 > Laminate roll



Load the printed roll and move it against the roll guide. Tighten the core holder.



Load an empty cardboard core onto the shaft intended for to rewind the laminate liner. Tighten the core holder.

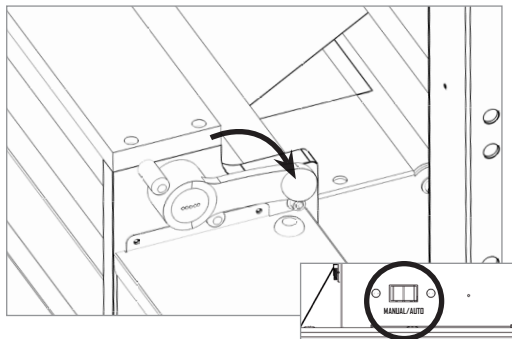


Load the lamination roll, move it along the supply shaft and make sure the lamination is aligned with the media roll.

IMPORTANT: the lamination roll always needs to be narrower than the web width.

Example: if the web width is 7" then the lamination roll needs to be lesser than 7" (let's say 1/4 inch on each end).

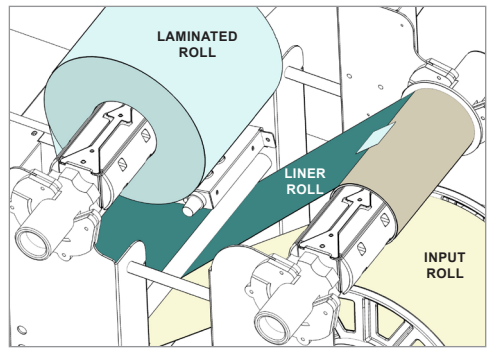
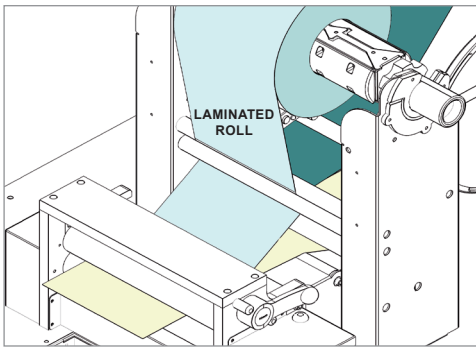
At this point you can tighten the core holder.



When the LEDs on the control board are off, the device works on a manual feeding.

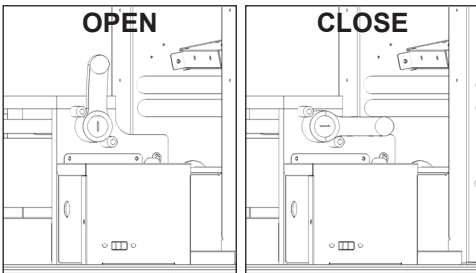
Move the media through the rollers, close the nip roller and press the FORWARD button. The media should move forward between the rollers.

Switch on "**Auto**" button to place the unit in automatic media feeding mode. Afterwards, the green led should be displayed.



Hold the laminating film with both hands, pull it through the guide rollers, center it and adhere the laminating film to the web and attach the liner onto cardboard.

!PLEASE LOOK AT THE LAMINATION PATH! (PAGE 27)



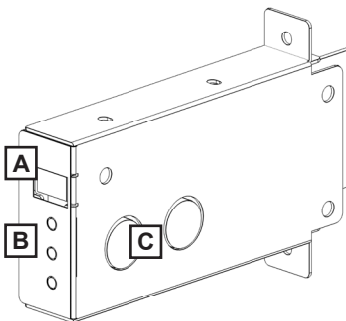
Using the black knob to open or close the nip roller.
This will apply pressure on the laminating film and allow it to adhere to the media avoiding any possible air bubbles.

When both yellow and green leds are flashing it means the system is in error status. The error occurs when both the media roll, and lamination roll are not loaded or broken, or the roll has simply ran out.

To clear the error, simply restart the module by switching to “Manual” then back to “Auto” again.

MEDIA TENSION CONTROL

Each core holder (ON THE LAMINATING & UNWINDING MODULE) is managed by its own controller designed to automatically set the required media tension on the rolls. This allows the tension to remain constant even if the roll diameter varies during the job.



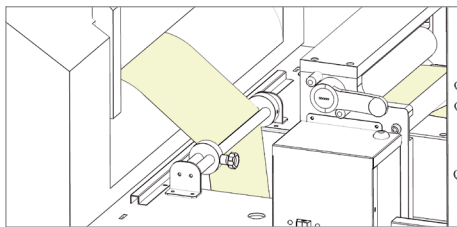
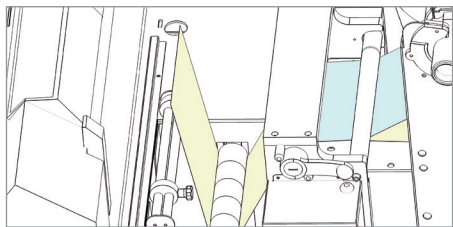
- A) Display
- B) ON/OFF : activate/deactivate the tension control
 - + : increase the media tension
 - : decrease the media tension
- C) Ultrasonic sensor

Display conditions:

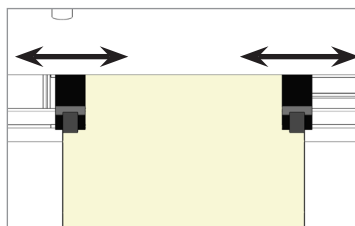
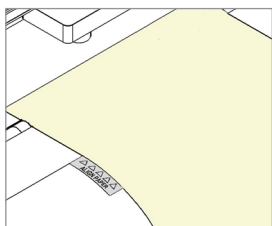
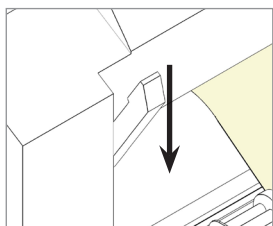
- flashing O - F - F = the controller is deactivated
- flashing number = the controller is active and it shows the tension level set

Press and hold “run” will allow the core to spin.

LOAD THE MEDIA INTO THE PLOTTER N.2

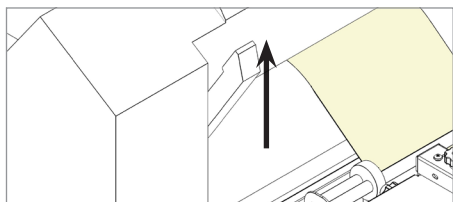


Pull the laminated media underneath the tension arm, then pass it through the aluminium rollers. The guide can be adjusted to prevent the web from rolling.



Put the lever, located in the rear of the plotter, in the down position. Pull the media through the plotter and keep the media edge aligned to the alignment points.

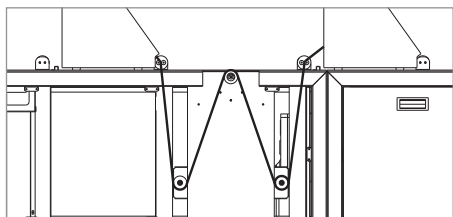
Set both pinch rollers right over the edges of media.



While holding down the media in the aligned position, lift the lever back to its up position. This will lock the media in place.

Press button 2 as requested on plotter's display.

HOW TO LOAD THE MEDIA THROUGH THE TWO PLOTTERS



For correct machine operation, load the media as shown in the drawing.

To load the media into plotter n.1, follow the steps listed above.

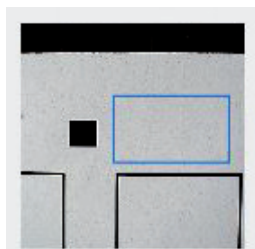
HOW TO RUN THE CUT TEST AND START A JOB

>> How to run the mark mode

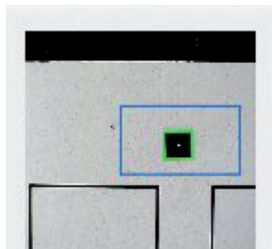
1. Open Cutting Manager.
2. Press “OPEN PDF” or “OPEN LAST JOB” to load the Cut file.
3. Load material into plotter 1 and enable just plotter n.1 (green led on)



4. Using the camera preview, press the “BACKWARD MEDIA” or “FORWARD MEDIA” arrows to move the web until the black mark is centered inside blue rectangle area.

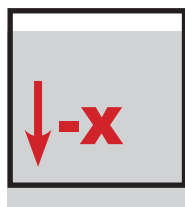


NO

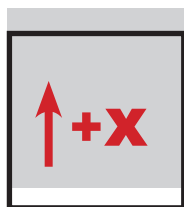


YES

6. Measure the distance in (MM) between the top of one mark to top of the next mark, key in this value in the “DISTANCE BETWEEN MARKS” box section.
7. Make sure to unflagged the “Enable” option when using blank mode.
8. Set the black-mark size” in “MARK MODE” area
9. Press “CUT TEST” to check for cut depth. If the liner has been cut, decrease the cutter pressure value in the cut force box. If label doesn’t detach, increase the cutter pressure value in the cut force box.
10. Make sure label is aligned with your print. **Using the offset X and Y values in the software, you can adjust offsets if cut doesn’t match the print.**



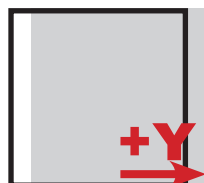
MOVE DOWN
THE CUTTING FILE



MOVE UP
THE CUTTING FILE



MOVE TO THE LEFT
THE CUTTING FILE



MOVE TO THE RIGHT
THE CUTTING FILE

←
CUTTING
DIRECTION

11. Once the cut settings are properly set, press “START”.
12. Cut enough material to reach the plotter n.2 and press “CANCEL” to stop.
13. Load material into plotter n.2 (Look the media path at bottom pag.27), select it on software, move to a row in between of two finished by plotter n.1 and set the cut properly as before.

Repeat steps nr.4 (this time align on the other mark), nr.6, nr.10, and nr.11



14. Once plotter n.1 is set, you are ready to cut with both machines.



IMPORTANT:

Whenever you lower and rise the lever while you are in black-mark mode, hold down the forward media arrow button to move again the plotter’s head down.

>> How to run in blank mode

1. Press “OPEN PDF” or “OPEN LAST JOB” to load the cut file.
2. Set the copy mode to ON, and insert 2 as number of copies.
3. Load material into plotter 1 and enable just plotter 1.



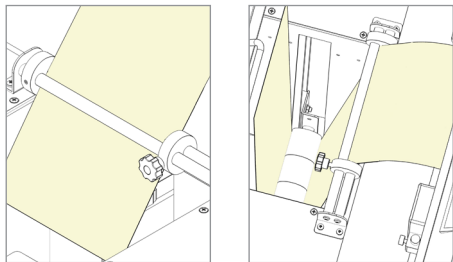
4. Flag “Enable” in the blank mode.
5. Press “CUT TEST” to check for cut depth. If the liner has been cut, decrease the cutter pressure value in the cut force box. If label doesn’t detach, increase the cutter pressure value in the cut force box.
6. If necessary, adjust the offset X.
7. Once the cut settings are properly set, press “START”.
8. Cut enough material to reach the plotter 2 and press “CANCEL” to stop.
9. Enable only plotter 2



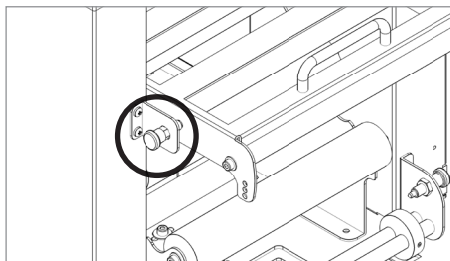
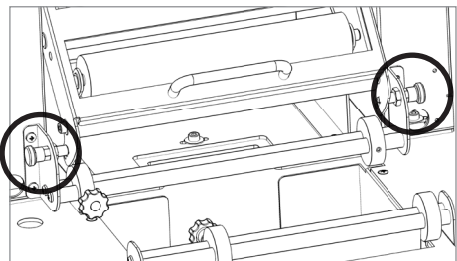
10. Using the camera preview, press the “BACKWARD MEDIA” or “FORWARD MEDIA” arrows to move the web until the small square cut by plotter 1 is centered inside blue rectangle area.
11. Select plotter 2 and set the cut properly as made with plotter 1 in step nr.6
12. Through offset X and Y values, set labels in order to have desired gap and alignment with shapes finished by plotter 2
13. Once plotter 2 is set, you are ready to start a job with both machines.



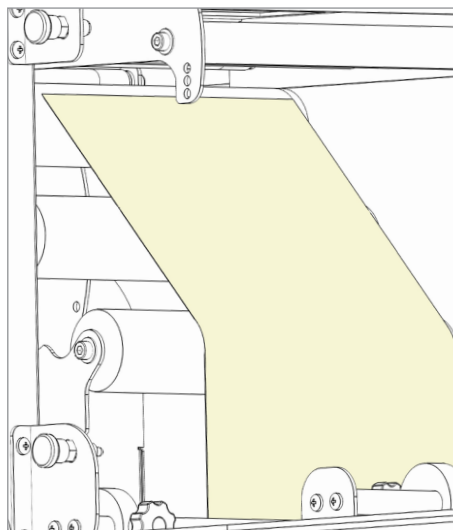
HOW LOAD THE MATRIX REMOVER & SLITTER



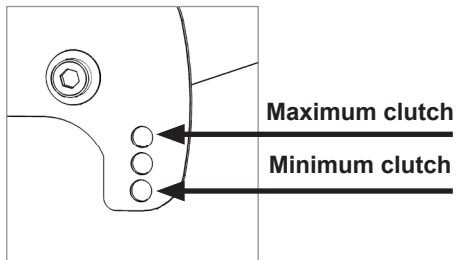
After your CUT TEST is successful, press "START" to cut a few labels until you think you have enough media to load onto the matrix remover.



Pull the sides of the black knobs and lift up the clutch system. Use the top black knobs to keep it open.



Pull the media through the aluminium rollers first (the guide can be adjusted in order to prevent the web from rolling) then through the clutch system. Close the loading system and the media will be automatically loaded into the clutch path.



The user can adjust the clutch force thanks to the position of the clutch system.

Maximum Clutch (rewinded roll more tight)

Minimum Clutch (rewinded roll less tight)

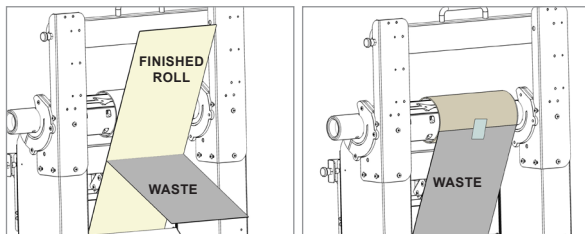
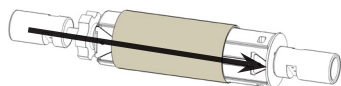
HOW TO LOAD THE MATRIX REMOVER CORE HOLDER



WARNING: Before starting a job, always remove the waste media from the matrix remover core.

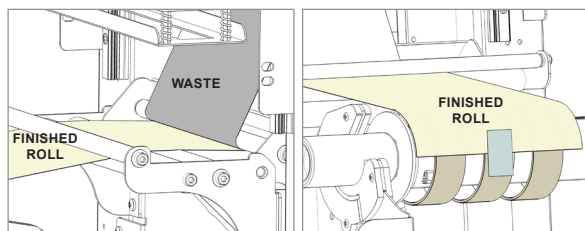
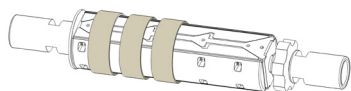
Tape the matrix securely onto the cardboard core.

System operating issues may occur if the above suggestions are not followed.



1. Load empty cardboard core(s) and tighten the core holder, then place the motorized core holder in position.
2. Peel back the matrix.
3. Pull the matrix and attach it to the matrix remover core holder.

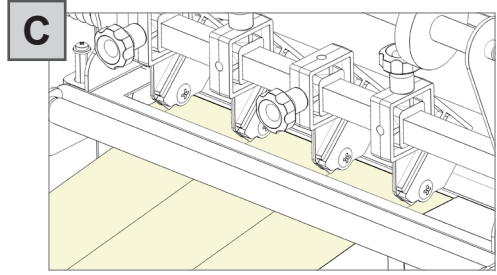
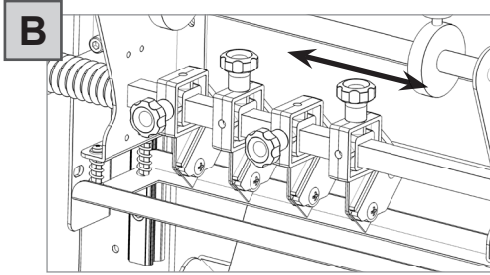
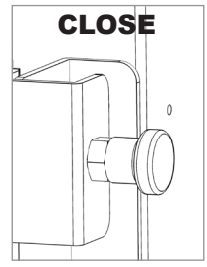
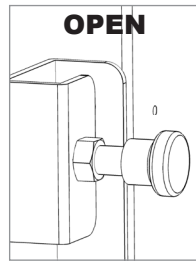
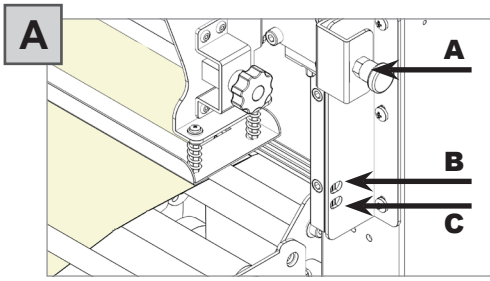
HOW TO LOAD THE REWINDER CORE HOLDER AND SET THE SLITTER MODULE



1. Load empty cardboard core(s) and tighten the core holder, then place the motorized core holder in position.
(Cardboard core(s) width should equal (or narrower) the width of the finished roll).

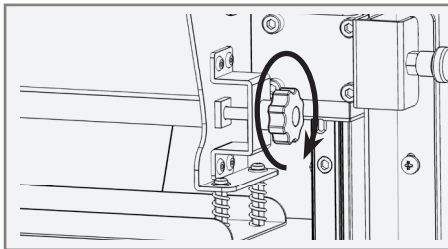
2. Pull the media through the aluminium rollers and attach the labels to the core using a waste label.

!PLEASE LOOK AT THE LAMINATION PATH! (PAGE 27)

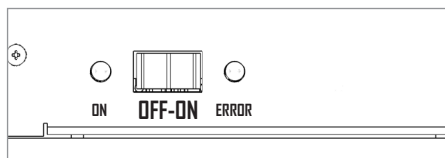


Slitter module has 3 positions:

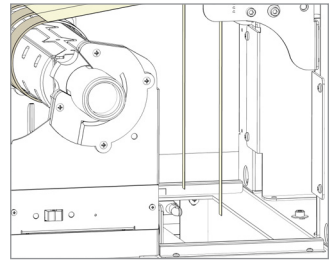
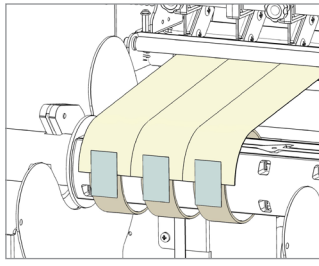
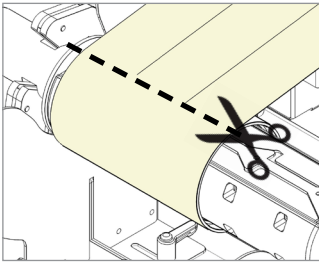
- Upper position (A), the blades are lifted to allow the media loading;
- Middle position (B), align the blades with the edges and the center of the labels, tighten the thumb screw once the blade is in position;
- Lower position (C), the blade cut the media.



The black knobs lock the slitter module in the requested position. Screw the thumb knobs to move the blades to the right or to the left.



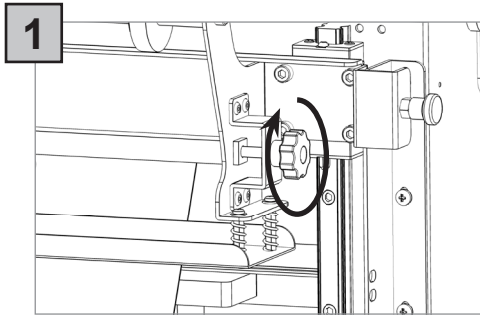
3. Turn ON the Matrix Remover module to rewind and split the media, then turn OFF.



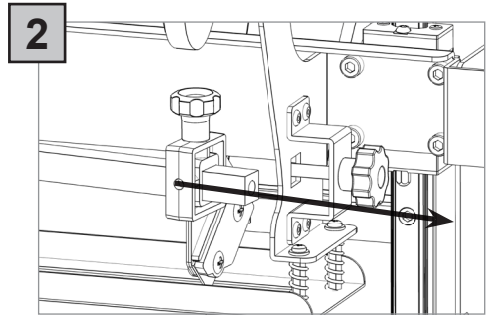
4. Cut the labels when the first “good” labels are visible;
5. Make sure the tension on all rolls is even and attach each label to the core using a waste label;
6. Feed edges trim waste into the waste basket under the hole.

Press RESUME to start your finishing process.

HOW TO ADD OR REMOVE A BLADE HOLDER

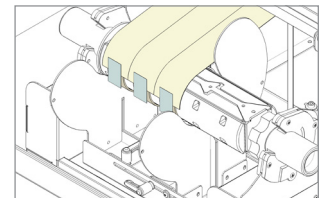
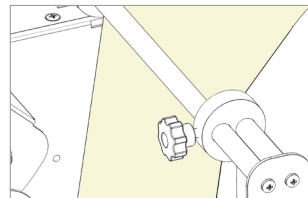
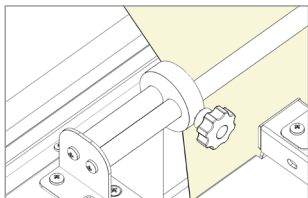


Remove the iron bar by unscrewing the black thumb screw.



Slide in or out the blade holder. Relocate the slide iron bar in its position and rescrew the thumb screw.

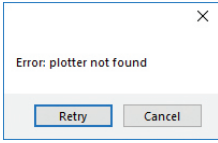
METAL GUIDE ALIGNMENT



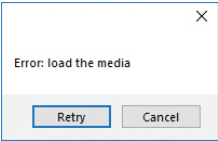
Metal guides can be adjusted in order to prevent the web from rolling.

ERROR MESSAGEGES

If the plotter is not connected correctly to the computer, the following errors will be displayed at the application launch:



Make sure the plotter is switched on and properly connected. If it is turned off, please turn the plotter on and then press the button 2 on control panel and wait until the reads “READY” status on the display. Then press retry on the popup window.

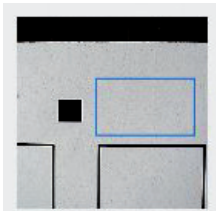


Make sure the plotter is switched on and properly connected. In case it is turned off, please turn the plotter on and than press the button 2 on control panel and wait until reads “READY” status on the display. Then press retry on the popup window.

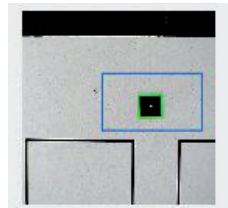
BLACK-MARK DETECTION

To prevent any issues, it is important that the camera is reading the black-mark properly.

Using the camera preview, press the “BACKWARD MEDIA” or “FORWARD MEDIA” arrows to move the web until the small square cut by plotter 2 is centered inside blue rectangle area.



WRONG POSITION



CORRECT POSITION

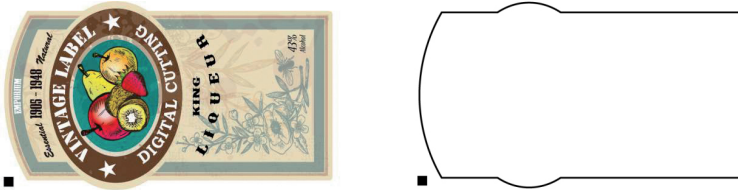
CUTTING FILE SPECIFICATIONS

Cut Files: Adobe Illustrator and/or Corel Draw (save as PDF file).

The artwork file within the cutting shape must include a registration square black mark having a size of 4x4mm or 2x2mm.

Only the cut contour lines (which must be completely vectorial and don't contain any filling) and black mark (not needed for the blank labels) can be in the saved cut file.

Graphics layers must be deleted or the cut line shapes must be copied in a new file and saved instead of hiding or disabling any extra content.



The cutting shape must be 100% black (otherwise in case of dashed lines, it must be a 100% magenta normal line) and have a thickness of 1 pt.

The black-mark MUST ALWAYS be the object placed in the lower left corner of any layout file.

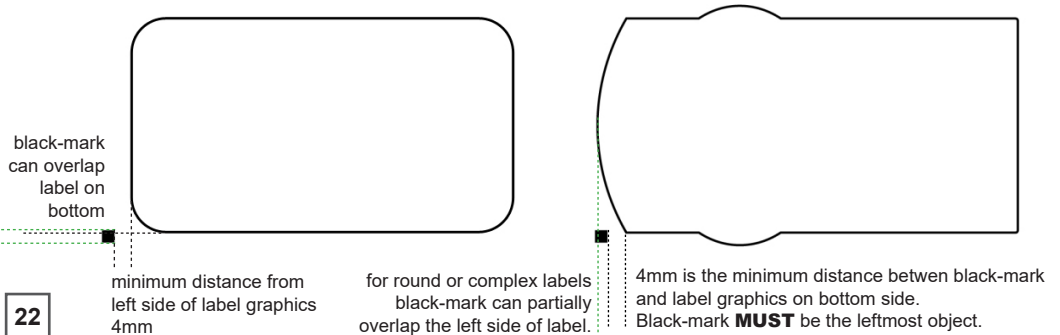
The Cutting Manager (CM) work with the VECTOR PDF FILE. You can create this file with Adobe Illustrator or Corel Draw.

MOST IMPORTANT:

To guarantee the black marks size and its position printed correctly on the media, the artwork must be printed with the actual size, make sure to avoid any fit or scale

BLACK-MARK POSITION INTO THE CUTTING FILE AND PRINTED ARTWORK

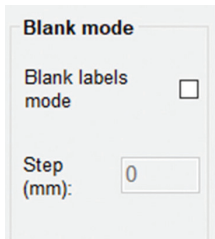
Black-mark size: 4x4mm or 2x2mm



BLACK-MARK POSITION IN THE MEDIA

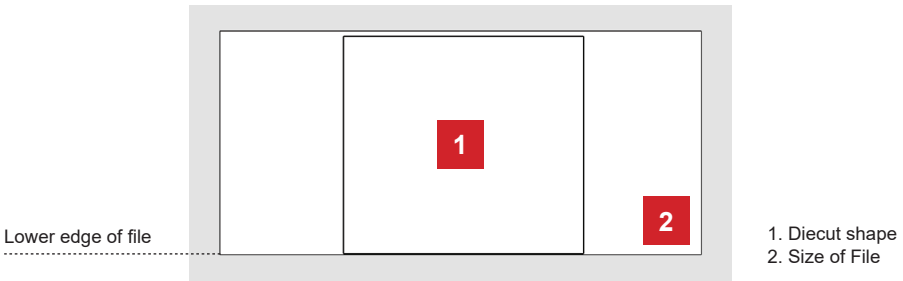


HOW TO CUT BLANK LABELS



If you wish to use the “blank label” feature to cut blank labels (without registration mark), please follow these steps:

1. Import the cut file (without registration mark) into the software.
2. Select the “blank label” feature from the software and enter the number of copies that you wish to cut.
3. Click “Start”.



The diecut shape must be attached to the bottom edge of the file. The distance you leave will automatically be added to the gap that you will enter in the “STEP” item.



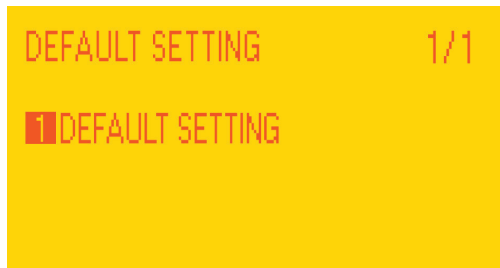
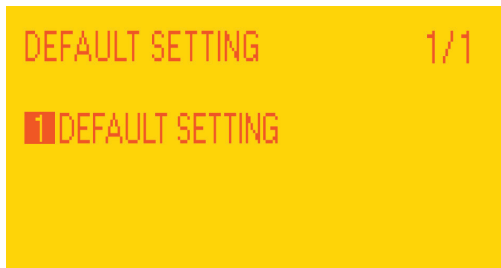
WARNING: Please note that enabling the blank label feature will disable both cut test and Y offset adjustment.

HOW TO UPDATE SOFTWARE

1. Go to Panel control.
2. Uninstall Cutting Manager.
3. Download from the website the new Cutting Manager release and run the installation.

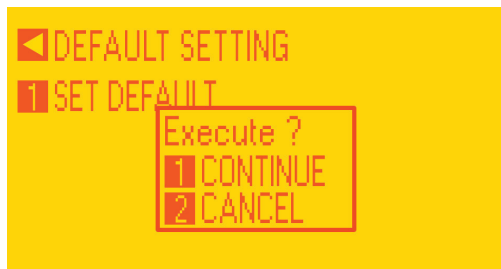
HOW TO RESTORE PLOTTER SETTINGS

1. Turn off the plotter.
2. Turn on the plotter while keeping pushed the UP arrow on the panel.



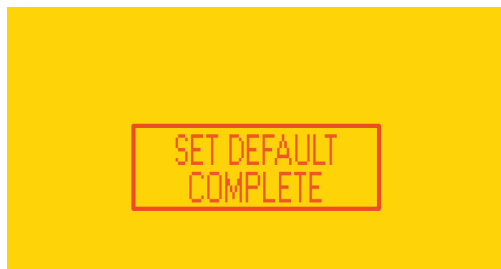
3. When the display shows “DEFAULT SETTING” press button 1.

4. Press button 1.



5. Press button 1.

6. In process.



7. When the display shows “SET DEFAULT COMPLETE” turn off the plotter.

8. Turn on the plotter and Choose the language and press enter.

LENGTH UNIT

- 1 METRIC
- 2 INCH

9. Select metric by pressing button 1 and then enter.

SELECT

- 1 ROLL-1 FRONT EDGE
- 2 ROLL-2 CURRENT POSITION
- 3 SHEET

10. Press button 2.

1: Condition no. 1
CB09U+0 S30 F14 A2
READY

MA
NUL

- 1 VIEW
- 2 HOME

11. Wait until on the display appears "READY".



12. Press "PAUSE/MENU" then go to I/F (press up arrow key).

Esc INTERFACE 1/3
▲
1 BUFFER CLEAR
2 COMMAND
3 HP-GL ORIGIN POINT
4 HP-GL MODEL EMULATED
▼

13. Go to Command (press 2).

COMMAND

- 1 GP-GL
- 2 HP-GL
- 3 AUTO

ENT
ER SET

◀ CANCEL

14. Select GPGL (press 1 then enter).

1: Condition no. 1
CB09U+0 S30 F14 A2
READY

MA
NUL

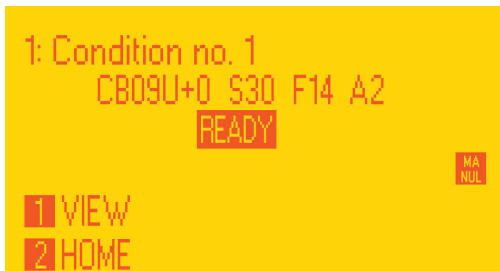
- 1 VIEW
- 2 HOME

15. Press "PAUSE/MENU".

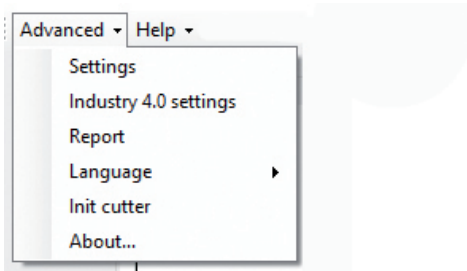
SELECT

- 1 ROLL-1 FRONT EDGE
- 2 ROLL-2 CURRENT POSITION
- 3 SHEET

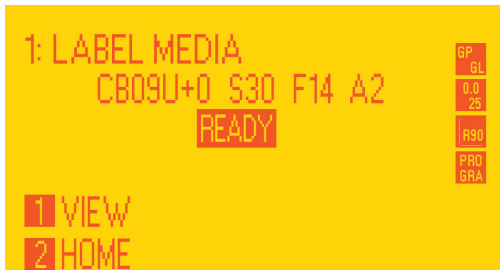
16. Restart plotter then press button 2.



17. Wait until on the display appears “READY”.



18. Open the Cutting manager and click on “Advanced” and then select “Init cutter”. Click “YES” to confirm



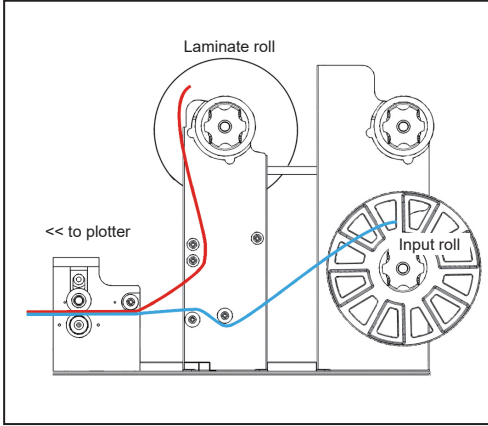
19. Wait until “Init cutter completed” will be shown in the status bar. Plotter display will show “LABEL MEDIA” as status.

WHEN AND HOW TO REDUCE THE PLOTTER FEEDING SPEED

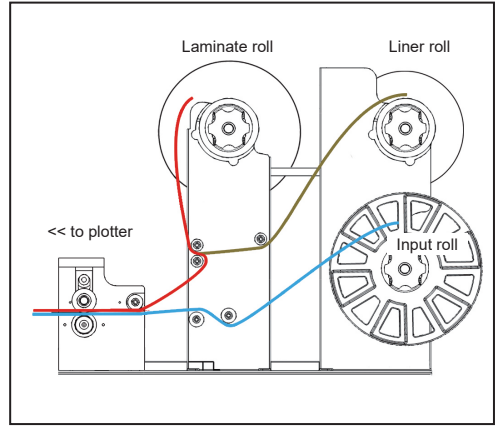
When cutting label longer than 250mm, it is recommended to decrease the cutting speed. The cutting speed reduction depends on the job in process.

The cutting speed can be set within the range of 50 to 600.

LAMINATION MODULE

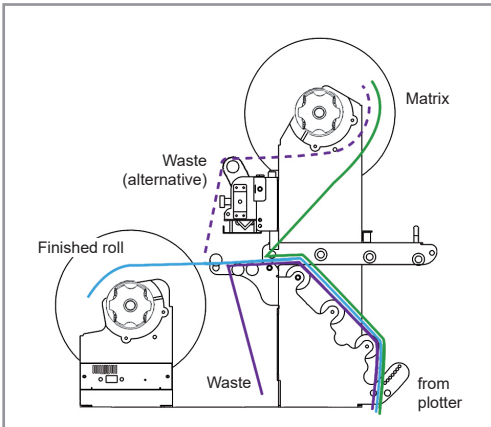


LAMINATION MODULE
(without liner)



LAMINATION MODULE
(with liner)

MATRIX REMOVER & SLITTER MODULE



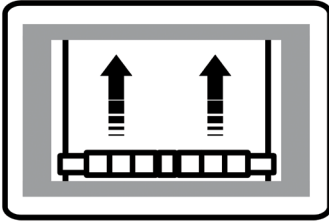
MATRIX REMOVER
AND SLITTER MODULE



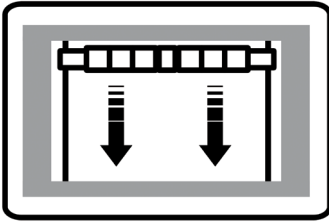
CAUTION:

Both cardboard cores loaded must be with the same external diameter.

LAMINATION MODULE

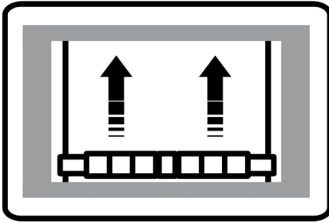


**SPEED
INCREASE**

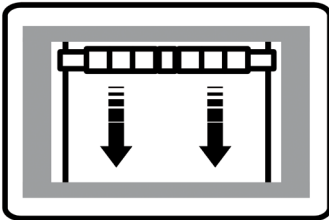


**SPEED
DECREASE**

MATRIX REMOVER & SLITTER MODULE

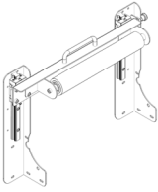


**SPEED
DECREASE**



**SPEED
INCREASE**

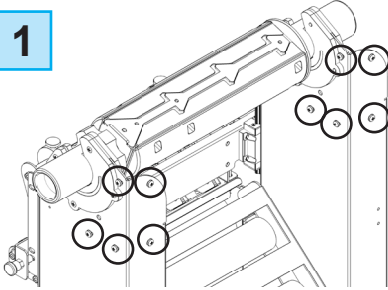
HOW TO INSTALL PRESSING ROLLER



The pressing roller facilitates the matrix removal from the die-cut roll.

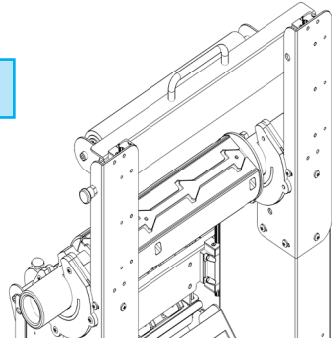
How to install the roller:

1



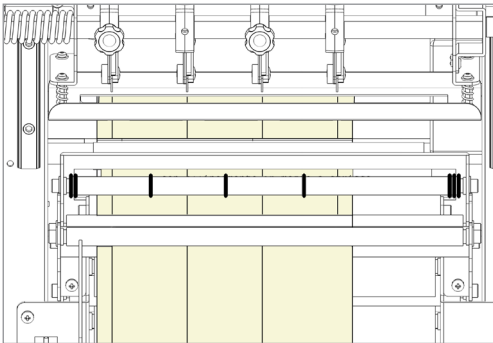
Unscrew the 10 screws on the matrix remover module.

2



Position the matrix remover roller onto the matrix remover module and secure it properly with the 10 screws.

HOW TO USED THE O-RING ON THE MATRIX ROLLER

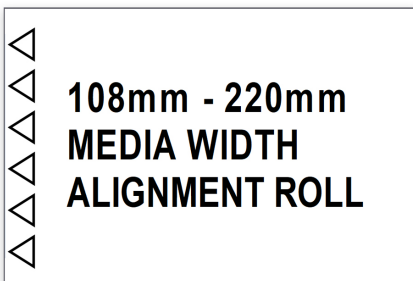


The o-rings of the matrix remover roller are used to facilitate the removal of your matrix from the labels.

Place one or more o-rings (depends on the width of the label) at the center of the die-cut label.

Then proceeds with the normal loading of the media. (pag. 18)

NARROWER MEDIA

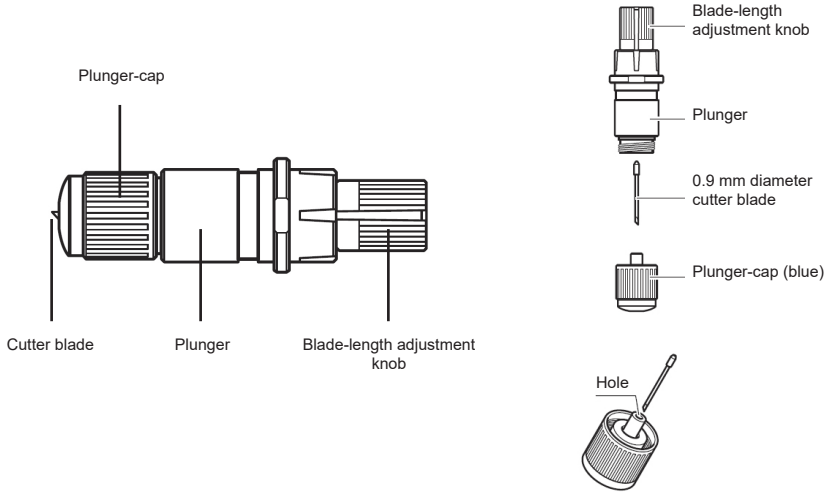


In order to use narrower media (from 108 to 220mm wide) on the SCR35X2, load the roll of labels exactly at the correspondence of the label onto the unwinder core holder.

Then load the empty cardboard core(s) in correspondence of the label onto the rewinder core holder.

Cutter Plunger

The plotter cuts using a cutter blade mounted in a plunger. There are two different plungers to suit the diameter of the cutter blade to be mounted (the 0.9 mm cutter plunger is provided as a standard accessory). Be sure to mount the cutter blade in the corresponding cutter plunger.



CAUTION:

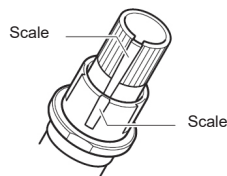
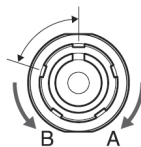
To avoid bodily injury, handle cutter blades with care.



WARNING: It may result in damaging the cutter blade or the cutting mat if the blade is extended too much. Make sure the blade length is set less than the thickness of the media.

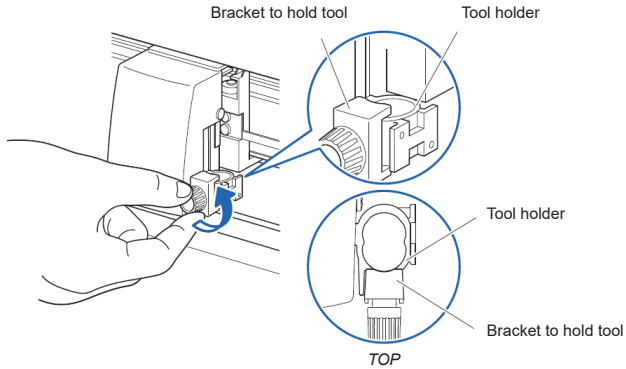
Adjust the blade length by turning the blade-length adjustment knob. Turn the knob in direction “A” to extend the blade, or in direction “B” to retract the blade. When the knob is turned by one scale unit, the blade moves approximately 0.1 mm. One full turn of the knob moves the blade approximately 0.5 mm.

Cutter blade moves approximately 0.1 mm turning one scale unit

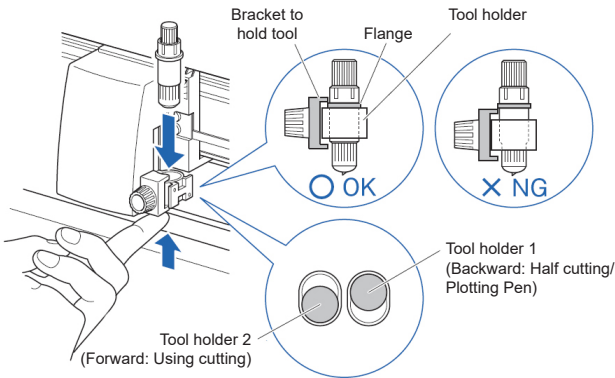


Mounting the tool

1. Loosen the tool holder screw.



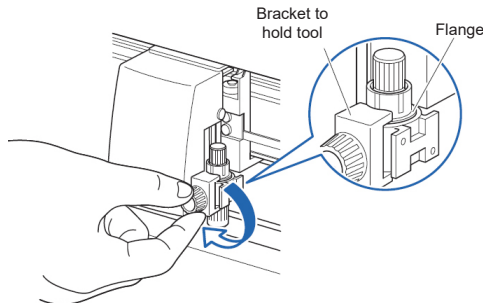
2. While pushing up the tool holder, push until its flange completely touches the upper part of the holder.



SUPPLEMENT:

When using with half cutting and plotting pen, set the seal in Tool Holder 1 (backward), and when using cutting out (perforated cut), set the seal in Tool Holder 2 (forward).

3. Make sure that the tool bracket is engaged on the tool's flange, and then tighten the screw.



Removing the tool

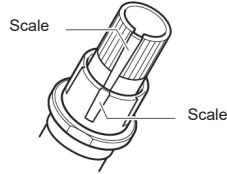
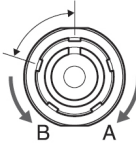
When removing the tool, turn it counterclockwise to remove the tool.

HOW TO REPLACE THE KNIFE

See page 27 for the structure of the cutter plunger.

1. Turn the blade-length adjustment knob in the direction of the B arrow and pull the blade into the plunger.

Cutter blade moves approximately 0.1 mm turning one scale unit

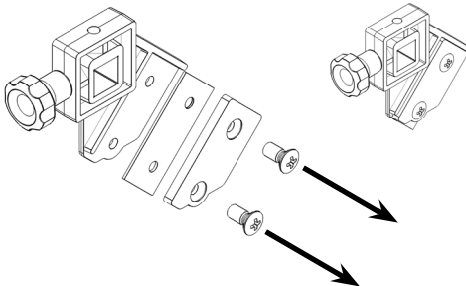


2. Turn the plunger cap in the counter-clockwise direction to remove it from the plunger.
3. Remove the blade from inside the plunger cap.
4. Remove a new blade from its pack. Insert the new blade into the hole provided in the plunger cap.
5. With the blade inserted into the plunger cap, screw on the plunger from above.
6. Fix the plunger cap by turning it clockwise.



ATTENTION: *In order to preserve the lifespan of the plotter knife and not to wear it out quickly, it is best to properly calibrate the knife exposure and cut force depending on the media thickness.*

HOW TO REPLACE THE SLITTER BLADE



Loosen the two screws holding the blade in place.

Replace the blade.

Fix back the screw to holding the blade in place.

HOW TO REPLACE THE CUTTING MAT

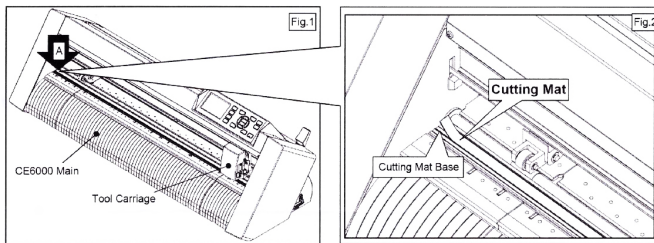


CAUTION:

**Please turn off the power when replacing the cutting mat.
Please move the tool carriage to "A" position allowing
for ease of work.**

1. Remove the cutting mat.

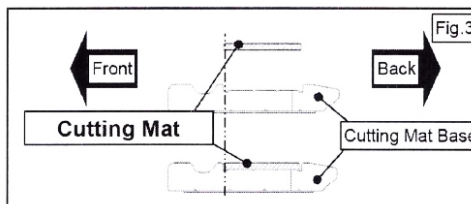
- The cutting mat is attached to the cutting base (fig.2)
- Please remove only the cutting mat from the cutting mat base from the location shown by the arrow (A) (fig.1)



- After removing the cutting mat, please make sure that there is no adhesive tape or other adhesives left on the cutting base.
- Please clean the cutting mat base before installing the cutting mat.
- Installing the cutting mat with the remaining adhesive may affect cut quality.

2. Installing the cutting mat.

- Fit the cutting mat with the front cutting base grooves (fig.3) and attach it from the location shown by the arrow (A) (fig.1) while peeling off the release paper.



HOW TO CREATE THE QR CODE

This feature allows system to load automatically the cut file related the job printed onto the media.

Simple steps to set properly the data matrix code.

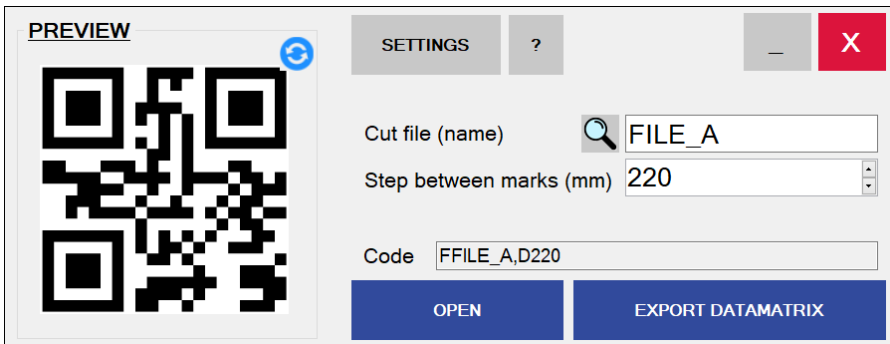
- use any QR code generator.
- mandatory size is 10x10mm.
- printed once at the beginning of each job.
- positioned at least 5mm from the media edge (same site of black-mark).

QR / DATA MATRIX SPECIFICATION

F(diecut file name),D(distance between marks(mm))

Example:

FFILE_A_A,D220



The screenshot shows a software interface for generating QR codes. On the left, a 'PREVIEW' window displays a QR code. To the right, there are control elements: a 'SETTINGS' button, a search icon, and three input fields. The first field is 'Cut file (name)' with the value 'FILE_A'. The second field is 'Step between marks (mm)' with the value '220'. The third field is 'Code' with the value 'FFILE_A,D220'. Below these fields are two buttons: 'OPEN' and 'EXPORT DATAMATRIX'. The interface also features a red 'X' button in the top right corner and a blue refresh icon next to the preview window.

QR CODE GENERATOR

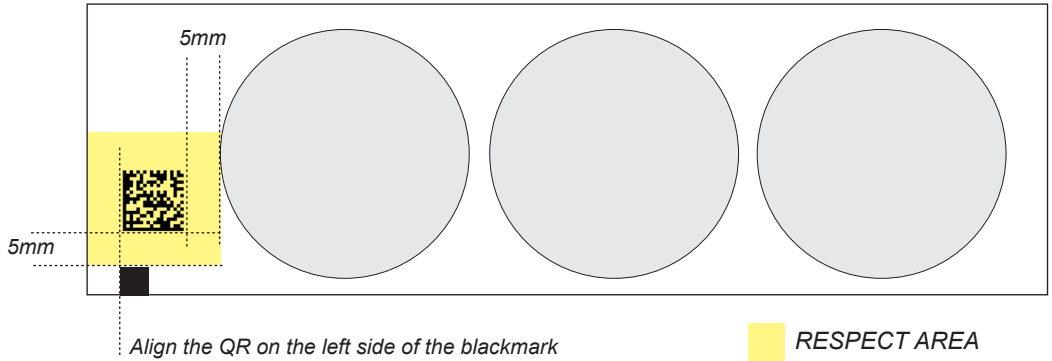
To create a QR / DATA MATRIX with the previous specifications, the quickest way is to use our **“Taurus Code Generator”** application (downloadable from our website)



!!IMPORTANT!

Make sure to write exactly the same cut file and laser parameters name including any space or symbol.

QR POSITION IN THE MEDIA



HOW TO RUN THE QR MODE

The cutting manager allows you to work with QR codes, for cut different jobs on the same roll.

The camera will scan the code and load automatically the required parameters. You have only to make sure that the cut files are put inside the barcode folder.

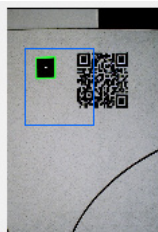
To see its location, click on the top left the “Advanced” button in the main interface, then settings, then click “BARCODE FOLDER”.

To start a job follow these steps:

1. On the top left click on “Advanced” and go into “Settings”.
2. Flag “QR MODE” and click “Save”.



3. Move the mark and the QRcode inside the camera view with the forward and backward media buttons.

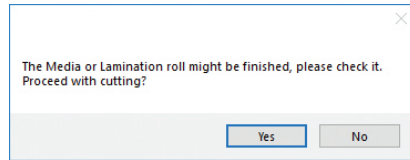


4. Set the cut force and speed desired.
5. Run a job with “Start” or “Cut Test”. The camera will read the QR code and load the cut file and parameters.

IF YOU ARE EXPERIENCING THE FOLLOWING ISSUES WITH THE ANY OF OUR SCORPIO UNITS, PLEASE FOLLOW TROUBLESHOOTING STEPS BELOW

Yellow and Green LED's simultaneously on lamination control board **(Applies to all Scorpio models)**

Problem: Yellow and Green LED's simultaneously on lamination control board. This will also create the following error:



Cause: All Scorpio Digital Finishing Systems are equipped with two reflective sensors on the lamination module. One is the media sensor, located right after the first two guide rollers, and the other is the lamination sensor, mounted between the two black knobs on the rubber roller assembly. When both the yellow and green LED's on lamination control panel are on, it would indicate that either one or both of the sensors have picked up an error and the cause could be due to either the media or lamination roll has run out or the sensors may be out of sync and needs to be re-calibrated. The following steps below will show you how to tell when each sensor is in error mode and how to correct it or help you re-calibrate each sensor if needed.

Media not aligned properly

Problem: If the media is not aligned properly after running a couple of jobs.

Cause: This problem occurs for a couple of reasons. The primary reason would be that the tension force on the on the rubber roller assembly, media core and the lamination core (If using lamination) are all out of sync and needs adjusting. Another reason could be that the media was wounded unevenly to begin with thus creating an uneven media roll. Make sure the distance between top to top black-marks is set correctly.

Fix: First check to see if you have a flat even media roll before you begin installation. An uneven media roll will cause the job to misalign itself. If that checks out ok, then you will need to adjust the tension force on the lamination module. To do this you must turn the two black knobs located at the top the rubber roller assembly to adjust the tension force until you receive satisfactory results. If needed, this may have to be done in conjunction with adjusting the clutch tension on both the lamination core (*If using lamination*) and the material core using the aluminum handles. Adjust the tension force at all three locations accordingly until you get the perfect setting and the media is properly aligned.

Plotter error “E01017 Hardware X Position Alarm Power off then on”



E01017 HARDWARE
X POSITION ALARM
POWER OFF THEN ON

Problem: The plotter displays an error “E01017 Hardware X Position Alarm Power off then on”.

Cause: The plotter will give you this error after starting a job in *Scorpio CM* and the tensioner arm was not set-up to begin with or the tensioner arm was positioned too high after turning on the lamination module.

(NOTE** To set the tensioner arm properly, the arm must always be at a midpoint position or lower before turning on the lamination module).**

Fix:

1. To set-up the tensioner arm, first turn off lamination module.
(NOTE** The lamination module must be off for the next steps to work.)**
2. Use the arrow buttons at the top of the control panel to manually feed the media forward until the arm descends into the correct position (****Correct position for the tensioner arm will be midpoint or lower****).
3. Once Tensioner is in the correct position, turn ON lamination module.
(If done successfully, the tensioner arm will automatically re-adjust itself thus activating the unwinder motor).
4. Restart Cutting Manager software

Plotter is not cutting or Plotter cutting all the way through the material

Problem: After starting a job, you notice that the plotter is not producing a clean cut through the media or the plotter is cutting all the way through the media.

Cause: This happens if cut force in or blade exposure may be set too low if it's not producing a clean cut or if it's cutting all the way through the media it could be set too high.

Fix: If the plotter is not producing a clean cut, this can be fixed by either; increasing the cut force in *Scorpio CM* while decreasing the blade exposure until the unit provides satisfactory results or you can also decrease the cut force and increase the blade exposure until it produces a perfect cut. Adjust both accordingly until the correct cut setting has been achieved.

If the plotter is cutting through the media, this can be fixed by decreasing both the cut force and blade exposure to factory settings and start by increasing the cut force until you get a clean cut. You may have to increase the blade exposure while decreasing the cut force there's a clean cut and the correct settings is has been achieved.

(NOTE**You can continue to increase the blade exposure if necessary, but remember that when you increase the blade exposure, do not simultaneously increase the cut force or you will cut through the cutting mat below the media. It is always best to increase one setting while decreasing the other or just increasing one setting only, normally the blade. Never increase both settings simultaneously)**

Plotter error “E01019 Hardware Y Position Alarm Power off then on”

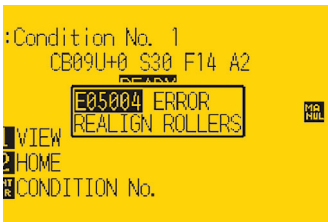


Problem: The plotter displays an error “E01019 Hardware Y Position Alarm Power off then on”.

Cause: This error occurs when the blade tray was moved from side to side by the user after loading the media onto the plotter and with the rear plotter lever in the up position.

Fix: To fix this error, you must first power off the plotter, turn the plotter back on, wait for the display on the plotter to load, then press the number “2” as instructed on the plotter to complete the set-up.

Plotter error “E05004 Hardware Realign Push Rollers Confirm”

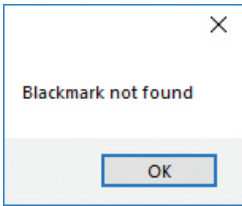


Problem: The plotter displays an error “E05004 Hardware Realign Push Rollers Confirm”

Cause: This error occurs when the pinch rollers are not aligned properly with the plotter’s grips.

Fix: Before feeding the material through the plotter (While the rear lever is in the down position) be sure that the pinch rollers are aligned properly with the plotter’s grips.

Cutting Manager error “Black-mark not found”



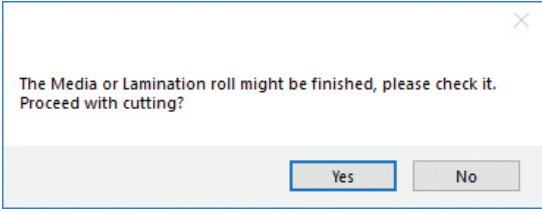
Problem: After starting a job in *Scorpio CM*, you get an error “Black-mark not found”.

Cause: This problem occurs when after you start the job and the software can’t detect the black-mark on the media. The reason for this could be the following; the media is missing a marker to begin with; the media is not aligned with

the arrows points labeled on the front and back of the plotter; the plotter’s camera is not positioned correctly; and the plotter’s camera is picking up too much exposure from the sunlight or another light source.

Fix: To fix this, before you start any job in *Scorpio CM* be sure to always do the following; check and make sure the media has a black-mark printed on it to begin with; manually aligned the media with the arrows points labeled on the front and back of the plotter (*This is done with the plotter’s rear handle in the down position*); make sure to position the plotter’s camera over the blackmark in order to centered marker as much as possible on the software camera preview.

The Media or Lamination roll might be finished, please check it. Proceed with cutting?

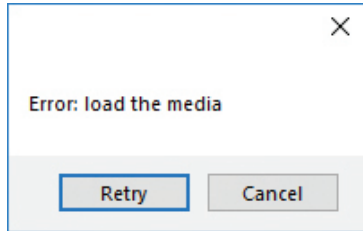


Problem: Yellow and Green light simultaneously on lamination control board.

Cause: When both the yellow and green LEDs on lamination control panel are on, it would indicate that either the media or lamination sensor have picked up and error or the sensors may be out of sync and needs to be calibrated.

Fix: To fix this, please refer to the “Yellow and Green LED’s simultaneously on lamination control board” guide above to resolve.

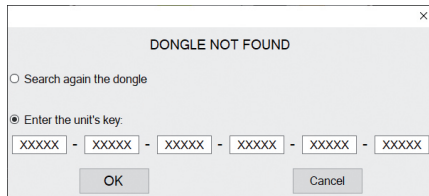
Error: load the media



Cause: You launched the Cutting Manager while the plotter’s lever was down.

Fix: Rise the lever on the plotter, than press the button 2 on control panel and wait until the display will show “READY” as status. Then press retry on the popup window.

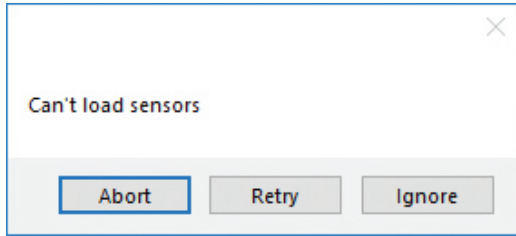
Dongle not found



Cause: This occurs after opening the software while the dongle (the red key) was not plugged into the internal hub. This can also take place when the USB cable from the unit was not plugged to the pc or when you’re first installing the software.

Fix: Plug the dongle to the hub, or the unit USB to the pc and click retry. If this does not fix the issue, please contact your dealer to get a new activation key and go to the section titled “SOFTWARE ACTIVATION” at page 11 for further instructions.

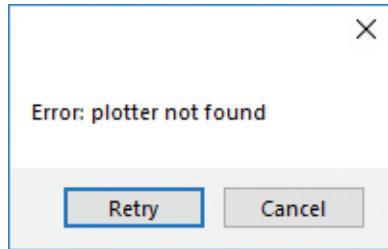
Can't load sensors



Cause: Media/Lamination sensors might be not plugged in correctly or turned off.

Fix: Check if sensors are powered up and plugged correctly into the black sensor box. Then Retry. If you do not want to keep activated the sensors, click Ignore.

Error: plotter not found

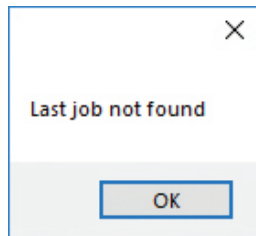


Cause: The plotter might be switched off or not properly connected.

Fix: Make sure the plotter is turned on and properly connected.

In case it is turned off, please turn the plotter on and then press the button 2 on control panel and wait until the display will show "READY" as status. Then press retry on the popup window.

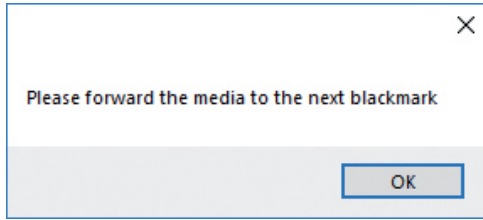
Last job not found



Cause: You will get this error when you try to open the last job when you run Cutting Manager for the first time after the installation.

Fix: Choose your file through "Open PDF".

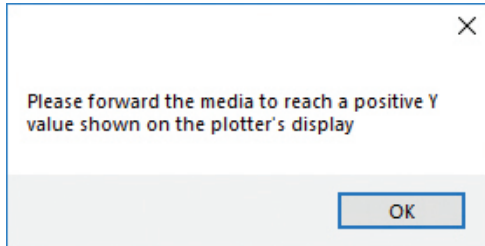
Please forward the media to the next black-mark



Cause: The starting Y position of the cut is a negative value (you can see coordinates on plotter's display when you move the media with arrows). **Keep in mind also the offset influences the starting position of the cut. So, if you start the cut at Y coordinates 0, while you have an offset Y value of -10, you will still get this error.** This error might happens when the media has been just loaded.

Fix: Move to the next black-mark. If it is not enough, forward until you have reached Y coordinate value major than 0.

Please forward the media to reach a positive Y value shown on the plotter's display



Cause: The starting Y position of the cut is a negative value (you can see coordinates on plotter's display when you move the media with arrows). This error might happens when the media has been just loaded.

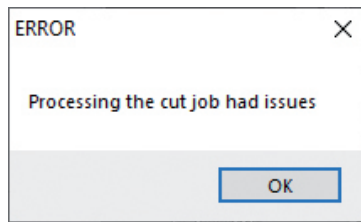
Fix: Move forward until you have reached positive Y coordinates.

Error after opening a .pdf file

- Cause:** - The antivirus doesn't allow the software to open the file
- The file is loaded from a server web or a remote disk. This may create issues sometimes
 - The file is not properly built

- Fix:**
- Add the cutting manager to your antivirus's whitelist
 - Move your file to your computer
 - The cutting file must contain only:
 - The contours lines
 - The Black-Mark, in case of Black-Mark mode cutting

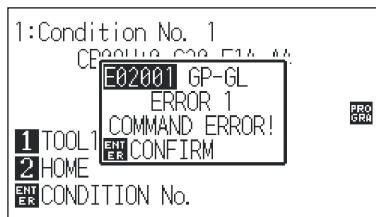
Processing the cut job had issues, or error after opening a .pdf file



Make sure that:

- 1- The cut file contains **JUST VECTORIAL LINES AND NOT ANY FILLED FIGURE**, and has been built properly
- 2- The cut file is opened from a pc folder, and not any usb or external network folder.
- 3- Add the cutting manager to your antivirus's whitelist.
- 4- Use just standard occidental letters or numbers for the file name.

E02001 GPL Error 1 command error!

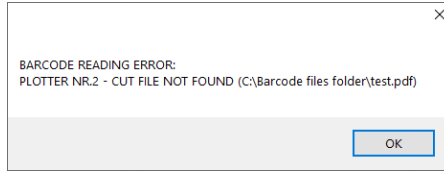


Make sure that:

- 1- The cut file contains JUST VECTORIAL LINES AND NOT ANY FILLED FIGURE, and has been built properly
- 2- The cut file is opened from a pc folder, and not any usb or external network folder

If this doesn't solve, restore and init the plotter (pag.24)

Cut file not found

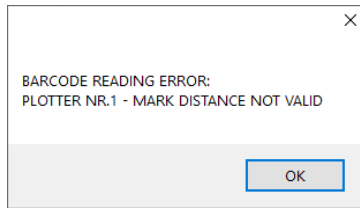


It means that the cut file name parameter is missing from the QR code (**check “HOW TO CREATE QR CODE” page 34**) or that the file doesn't exist inside the barcode files folder, and must be placed there.

To show this directory, click on the top left the “Advanced” button in the main interface, then settings, then click “BARCODE FOLDER”.

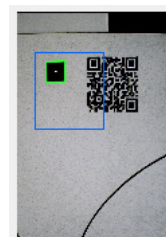
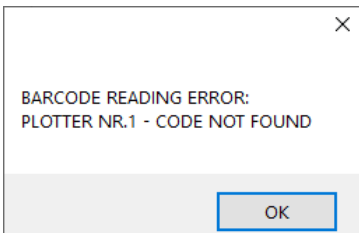
Consider also that the cut file name inside the datamatrix code, **MUST NOT CONTAIN THE EXTENTION OF THE FILE** (so without .pdf at the end).

Mark distance not valid



It means that the distance between marks parameter is missing from the datamatrix code (**check “HOW TO CREATE QR CODE” page 34**) or that its value is not acceptable.

Barcode reading error



When this error shows up it means the QR code has not been recognized by the camera. To solve make sure that is displayed inside the preview as here.

